
HOW TO NOTES

Helpful hints to get the most out of your ELF

Setting up USB to Serial Adaptor to Work With ELF Sequencer Software

INTRODUCTION

A serial port connection is used to communicate between the computer and the ELF Sequencer. Not all computers have a serial port. In these cases, a USB to serial adaptor is required. This note takes you through the steps of setting up to the adaptor to use with the ELF Sequencer.

THE USB to Serial Adaptor Setup

1. Plug in the USB to serial adaptor and make sure that the link light is on.
2. Right Click on the My Computer icon and then select manage from the menu. This will bring up the Computer Management screen. (see below) The screen may differ slightly from the one below but this won't matter.
3. Select Device Manager on the window on the left hand side.
4. Click on the plus sign beside the Ports (COM & LPT) to expand the item.
5. Write down the port number for the Serial on USB Port device. In this case the port is COM3 – as shown below.

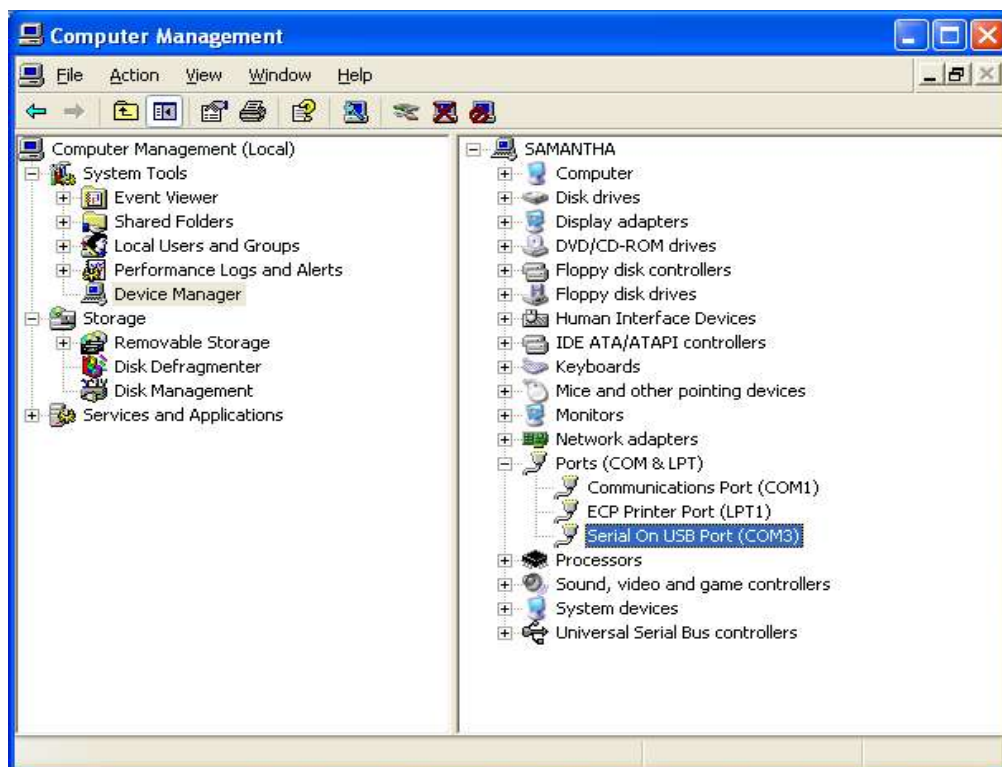


Figure 1.

-
- Now start up the Elf Sequencer program and select FILE and then CONFIGURE COMMUNICATOR. The following window should now be visible.

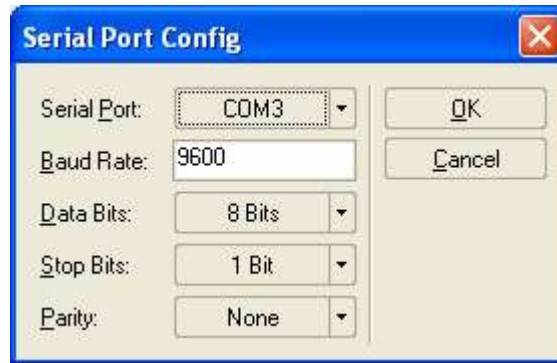


Figure 2.

- In the Serial Port Config box, select the COM Port that corresponds to the port where the USB to Serial adaptor is installed. Make sure the other settings are the same as in Figure 2, above.
- Now choose FILE and then CONNECT to connect to the ELF.

Congratulations – it is all done. Now enjoy the ELF and Merry Christmas.

...oooOOOooo...