
HOW TO NOTES

Helpful hints to get the most out of your ELF

Getting Started With The ELF Sequencer

INTRODUCTION

Congratulations on getting an ELF Sequencer. This will really make you Christmas light displays even better. This note will take you through the steps to set up your ELF Sequencer.

Contents of the Package.

Your package should contain the following:

- An ELF Sequencer controller
- A plug pack power supply
- A serial lead
- 8 x 2way light plugs
- Software CD

1. Load the Software On To The Computer.

- On the CD, you will find the software file titled *elfsequencer_setup_1.0.0.exe*.
- Running this file will take you through the steps on installing the software.
- Once the software is installed, run the program *elfsequencer.exe*, or click on the ELF Sequencer icon on your desktop.

Figure 1 shows the main screen for the ELF Sequencer software. This allows you to create, test and alter you patterns before programming the ELF Sequencer controller.

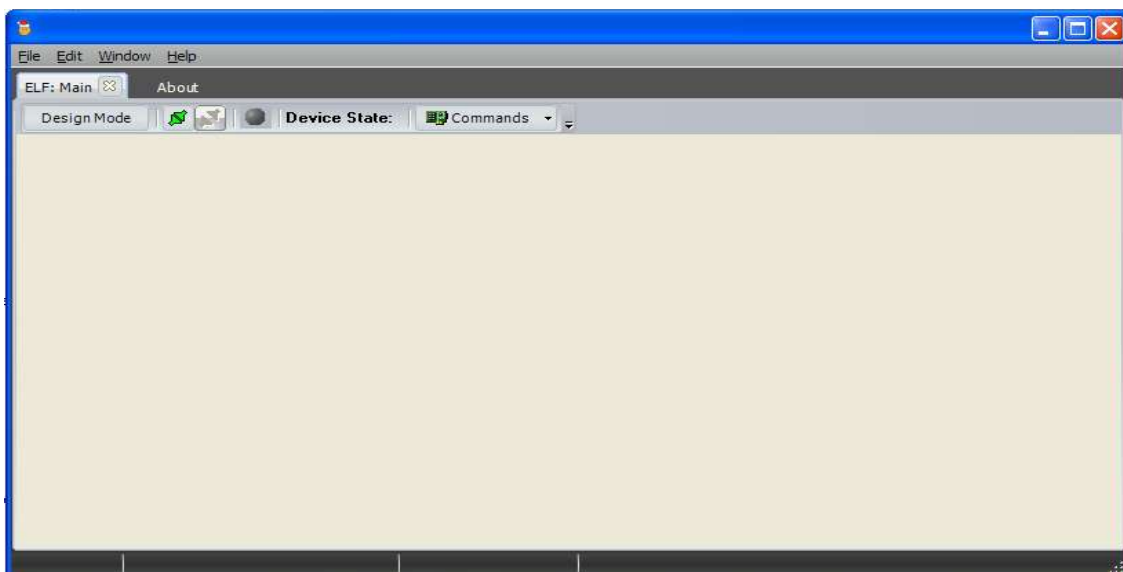


Figure 1. ELF Sequencer Main Screen

2. Connect the Power Supply to the ELF Sequencer Controller and turn on.

Plug in the plug pack power supply to the ELF Sequencer controller and the mains. There is no on/off switch on the ELF Sequencer controller, so when you turn on the power at the mains, the controller will turn on.

3. Connect the serial lead to the ELF Sequencer Controller and the computer.

The serial lead plugs into the ELF Sequencer controller at one end and the DB9 serial port of the computer at the other end. If the computer does not have a serial port, you will have to use a USB port. You will need to purchase a USB to serial adaptor. *How To - Setting up USB to Serial Adaptor* explains how to set up the adaptor to work with the ELF Sequencer. It is very simple.

4. Running the ELF Sequencer Program.

- For the ELF Sequencer program to communicate with the ELF Sequencer controller, you will need to configure the connection.
- On the ELF Sequencer program, select *File -> Configure Communicator*.
- The screen in Figure 2 will be displayed. The only selection that should be changed is the *Serial Port*. Select the correct port. If you are using a USB to serial adaptor, see *How To - Setting up USB to Serial Adaptor* on how to determine the Serial Port (if you don't already know).

NOTE: You will only need to do this once. The program will remember the change!

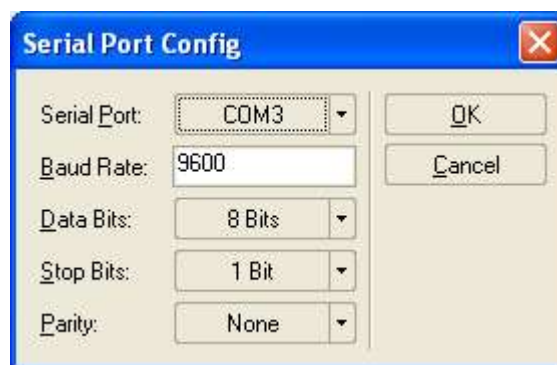


Figure 2.

- Once the port connection has been configured, you should be able to connect to the ELF Sequencer controller.
- From the main screen, press the *connect* button as shown in Figure 3.

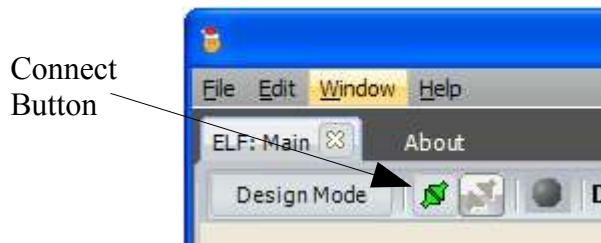


Figure 3.

- When the program has successfully connected to the controller, the program will show the channels which can then be programmed as shown in Figure 4.
- To turn a channel on, with the mouse, click in a box in the frame. To turn it off, click on it again. To select a fade frame, or to make it the last frame in the sequence, right mouse click in the frame and select the desired option.

Figure 4 shows channel 1 with a repeating on off sequence and channel 2 with a repeating Fade Up, stay on, turn off sequence.

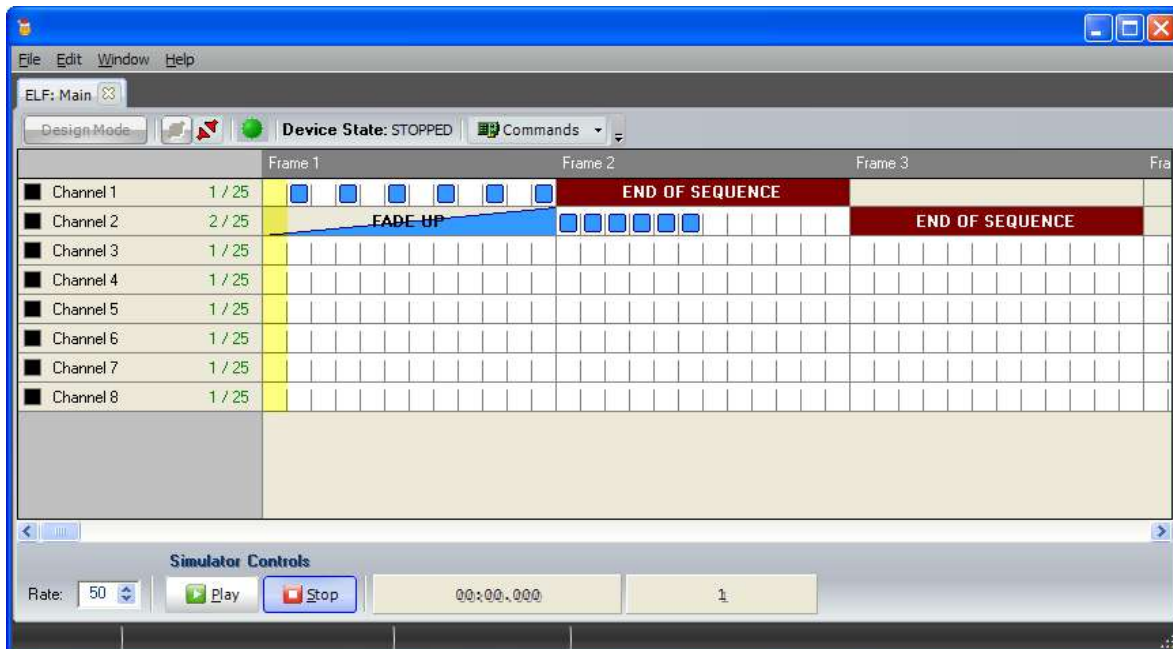


Figure 4.

- To change the speed, or rate, at which the lights will flash, change the *Rate* at the bottom left of the screen. The rate available are between 1 and 100, with 1 being the slowest and 100 being the fastest.

NOTE: Make sure that you place an End-Of-Sequence marker at the end of each channel.

-
- Once you have create your sequences on the channels, you can check it out using the simulator. Simply press play, and the “lights” to the left of the channels will show you the flashes as the sequences move through.
When you are happy with your setup, it is wise to save it. You can always come back later and change it. To save it, right mouse click on the sequences and then select *profile* and *save*. Choose a suitable filename.
Later, if you wish to reload a profile, right mouse click on the sequences and then select *profile* and *load*.
 - Now it is time to download the sequences to the controller. Click on the *Commands* button and then select *Send Config*. Once all 8 channels have been downloaded, click on the *Commands* button and select *run*.
If you wish to change any sequences or the rate, make the changes and download again.

When you are completely happy, your ELF sequencer is now programmed. You can disconnect it from the computer and connect it up to your Christmas lights. *How To - Connect Christmas Lights to the ELF* will show you how to do it. When you next power it up, the programmed sequences will automatically start.

Congratulations – it is all done. Now play around with it, enjoy the ELF and Merry Christmas.

...oooOOOooo...